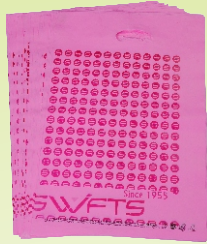


# SWIFTS

## SWIFTS POLYVALENT

### MULTIPLE APPLICATIONS - ONE SOLUTION

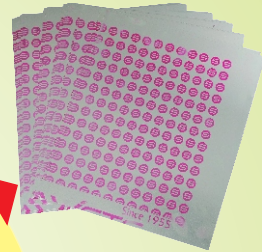
PLASTIC BAGS\*



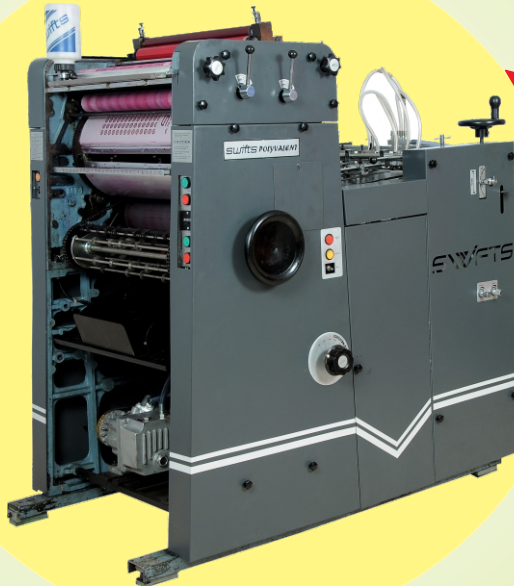
SCHOOL / COLLEGE  
ANSERSHEETS



ALUMINIUM SHEETS\*



ENVELOPES



FOLDED PAPERS



400 GSM CARD SHEETS

\* With UV Setup

Visit us at : [www.swiftoffsets.com](http://www.swiftoffsets.com)



## Features

- ▶ High Performance Feeder
- ▶ Low Maintenance
- ▶ Print With Polyester Master
- ▶ Unique delivery system
- ▶ Double Dampening System
- ▶ Improved In-Feed System
- ▶ Reverse Forward inching facility

## Specifications

Sheet Size (max)	<b>381 x 508 mm (15"x 20")</b>
Sheet Size (min)	<b>152 X 203 mm (6" x 8")</b>
Max. Printing Area	<b>355 X 495 mm (14"x19.5")</b>
Gripper Margin on Paper	<b>25.4</b>
Gripper Margin on Plate	<b>32</b>
Speed	<b>1500 - 5000 iph*</b>
Stock Handled	<b>30 gsm - 400 gsm</b>
Plate Size	<b>400 x 520 mm</b>
Plate Thickness max	<b>0.2 mm</b>
Blanket Size	<b>4 ply, 1.9 mm thick</b>
Drive Motor	<b>1 Phase, 0.75 HP D.C.</b>
Pump Motor	<b>1 Phase, 1 HP A.C.</b>
Electrical Supply Rating	<b>1 Phase, 230 V ± 10% 15 amp., 50 Hz</b>
Inker	<b>No. of Rollers : 12</b>
Damper	<b>No. of Rollers : 5</b>
Dimensions (LxWxH)	<b>1524 mm x 1016 mm x 1510 mm</b>
Weight	<b>750 Kgs</b>

## SWIFTS

an ISO 9001-2008 company

**SWIFTS Pvt. Ltd.**

**Registered Office / Works :**

B-37, NICE, MIDC, Satpur,  
Nashik - 422 007

Tel. : 91 - 253 - 2360011/12

E-mail : sales@swiftoffsets.com

vasant@swiftoffsets.com

Mob.: 09970054291

**Mumbai Office**

Marathe Udyog Bhavan,  
Appasaheb marathe Marg,  
Prabhadevi, Mumbai-400 025

Te. : + 91 22 24301342 / 2089 / 2453

Fax : + 91 22 24379863

**AUTHORISED DEALER / AGENT**

